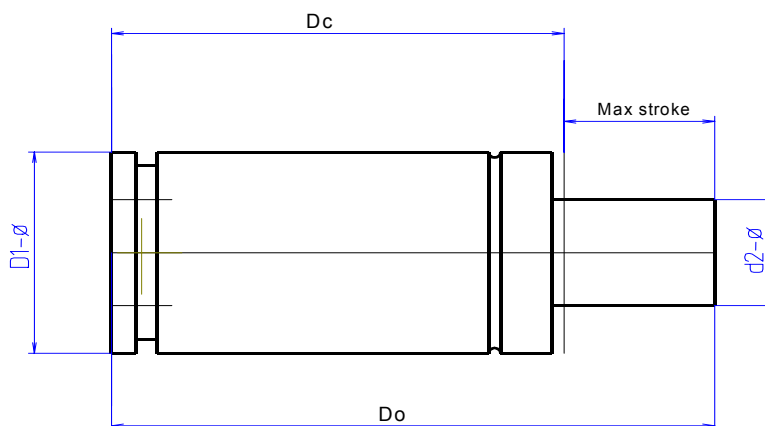


RLX Series - Xtra Compact Gas Springs



PART REF'	Max. stroke	Dc	Do	D1	d2	Initial pressure (bar)	Do initial force (daN)	Dc end force (daN)	Base fixing holes
RLX 350 x 10	10	40	50	32	16	180	362	488	(2 x) M6 x 6 deep on a 20 PCD
RLX 350 x 13	13	43	56	32	16	180	362	497	
RLX 350 x 16	16	46	62	32	16	180	362	502	
RLX 350 x 19	19	49	68	32	16	180	362	507	
RLX 350 x 25	25	55	80	32	16	180	362	512	
RLX 350 x 32	32	62	94	32	16	180	362	517	
RLX 350 x 38	38	68	106	32	16	180	362	519	
RLX 350 x 50	50	80	130	32	16	180	362	522	
RLX 350 x 63	63	93	156	32	16	180	362	525	
RLX 350 x 75	75	105	180	32	16	180	362	526	
RLX 350 x 80	80	110	190	32	16	180	362	527	
RLX 350 x 100	100	130	230	32	16	180	362	528	
RLX 350 x 125	125	155	280	32	16	180	362	529	
RLX 500 x 10	10	40	50	38	20	150	471	653	(2 x) M6 x 6 deep on a 25 PCD
RLX 500 x 13	13	43	56	38	20	150	471	667	
RLX 500 x 16	16	46	62	38	20	150	471	676	
RLX 500 x 19	19	49	68	38	20	150	471	683	
RLX 500 x 25	25	55	80	38	20	150	471	693	
RLX 500 x 32	32	62	94	38	20	150	471	700	
RLX 500 x 38	38	68	106	38	20	150	471	705	
RLX 500 x 50	50	80	130	38	20	150	471	710	
RLX 500 x 63	63	93	156	38	20	150	471	714	
RLX 500 x 75	75	105	180	38	20	150	471	717	
RLX 500 x 80	80	110	190	38	20	150	471	718	
RLX 500 x 100	100	130	230	38	20	150	471	720	
RLX 500 x 125	125	155	280	38	20	150	471	722	
RLX 750 x 10	10	42	52	45	25	150	736	1,079	(2 x) M8 x 6 deep on a 20 PCD
RLX 750 x 13	13	45	58	45	25	150	736	1,102	
RLX 750 x 16	16	48	64	45	25	150	736	1,117	
RLX 750 x 19	19	51	70	45	25	150	736	1,129	
RLX 750 x 25	25	57	82	45	25	150	736	1,145	
RLX 750 x 32	32	64	96	45	25	150	736	1,157	
RLX 750 x 38	38	70	108	45	25	150	736	1,164	
RLX 750 x 50	50	82	132	45	25	150	736	1,173	
RLX 750 x 63	63	95	158	45	25	150	736	1,179	
RLX 750 x 75	75	107	182	45	25	150	736	1,183	
RLX 750 x 80	80	112	192	45	25	150	736	1,184	
RLX 750 x 100	100	132	232	45	25	150	736	1,188	
RLX 750 x 125	125	157	282	45	25	150	736	1,192	

PART REF'	Max. stroke	Dc	Do	D1	d2	Initial pressure (bar)	<u>Do</u> initial force (daN)	<u>Dc</u> end force (daN)	Base fixing holes
RLX 1000 x 13	13	51	64	50	28	150	924	1,329	(2 x) M8 x 6 deep on a 20 PCD
RLX 1000 x 16	16	54	70	50	28	150	924	1,355	
RLX 1000 x 19	19	57	76	50	28	150	924	1,375	
RLX 1000 x 25	25	63	88	50	28	150	924	1,403	
RLX 1000 x 32	32	70	102	50	28	150	924	1,424	
RLX 1000 x 38	38	76	114	50	28	150	924	1,437	
RLX 1000 x 50	50	88	138	50	28	150	924	1,455	
RLX 1000 x 63	63	101	164	50	28	150	924	1,467	
RLX 1000 x 75	75	113	188	50	28	150	924	1,474	
RLX 1000 x 80	80	118	198	50	28	150	924	1,477	
RLX 1000 x 100	100	138	238	50	28	150	924	1,485	
RLX 1000 x 125	125	163	288	50	28	150	924	1,491	
RLX 1500 x 13	13	57	70	63	36	150	1,527	2,116	(2 x) M8 x 6 deep on a 20 PCD
RLX 1500 x 16	16	60	76	63	36	150	1,527	2,167	
RLX 1500 x 19	19	63	82	63	36	150	1,527	2,207	
RLX 1500 x 25	25	69	94	63	36	150	1,527	2,267	
RLX 1500 x 32	32	76	108	63	36	150	1,527	2,314	
RLX 1500 x 38	38	82	120	63	36	150	1,527	2,344	
RLX 1500 x 50	50	94	144	63	36	150	1,527	2,386	
RLX 1500 x 63	63	107	170	63	36	150	1,527	2,415	
RLX 1500 x 75	75	119	194	63	36	150	1,527	2,434	
RLX 1500 x 80	80	124	204	63	36	150	1,527	2,441	
RLX 1500 x 100	100	144	244	63	36	150	1,527	2,461	
RLX 1500 x 125	125	169	294	63	36	150	1,527	2,478	
RLX 2400 x 16	16	61	77	75	45	150	2,386	3,446	(4 x) M8 x 6 deep on a 40 PCD
RLX 2400 x 19	19	64	83	75	45	150	2,386	3,511	
RLX 2400 x 25	25	70	95	75	45	150	2,386	3,606	
RLX 2400 x 32	32	77	109	75	45	150	2,386	3,682	
RLX 2400 x 38	38	83	121	75	45	150	2,386	3,730	
RLX 2400 x 50	50	95	145	75	45	150	2,386	3,796	
RLX 2400 x 63	63	108	171	75	45	150	2,386	3,842	
RLX 2400 x 75	75	120	195	75	45	150	2,386	3,872	
RLX 2400 x 80	80	125	205	75	45	150	2,386	3,883	
RLX 2400 x 100	100	145	245	75	45	150	2,386	3,914	
RLX 2400 x 125	125	170	295	75	45	150	2,386	3,940	
RLX 4200 x 16	16	74	90	95	60	150	4,241	5,888	(4 x) M8 x 9.6 deep on a 60 PCD
RLX 4200 x 19	19	77	96	95	60	150	4,241	6,031	
RLX 4200 x 25	25	83	108	95	60	150	4,241	6,256	
RLX 4200 x 32	32	90	122	95	60	150	4,241	6,447	
RLX 4200 x 38	38	96	134	95	60	150	4,241	6,572	
RLX 4200 x 50	50	108	158	95	60	150	4,241	6,754	
RLX 4200 x 63	63	121	184	95	60	150	4,241	6,889	
RLX 4200 x 75	75	133	208	95	60	150	4,241	6,980	
RLX 4200 x 80	80	138	218	95	60	150	4,241	7,011	
RLX 4200 x 100	100	158	258	95	60	150	4,241	7,109	
RLX 4200 x 125	125	183	308	95	60	150	4,241	7,193	
RLX 6600 x 16	16	84	100	120	75	150	6,627	9,170	(4 x) M10 x 10 deep on a 80 PCD
RLX 6600 x 19	19	87	106	120	75	150	6,627	9,436	
RLX 6600 x 25	25	93	118	120	75	150	6,627	9,872	
RLX 6600 x 32	32	100	132	120	75	150	6,627	10,263	
RLX 6600 x 38	38	106	144	120	75	150	6,627	10,528	
RLX 6600 x 50	50	118	168	120	75	150	6,627	10,929	
RLX 6600 x 63	63	131	194	120	75	150	6,627	11,239	
RLX 6600 x 75	75	143	218	120	75	150	6,627	11,453	
RLX 6600 x 80	80	148	228	120	75	150	6,627	11,528	
RLX 6600 x 100	100	168	268	120	75	150	6,627	11,766	
RLX 6600 x 125	125	193	318	120	75	150	6,627	11,974	